



**RUTGERS**

UNIVERSITY | NEW BRUNSWICK

# **SEBS General Honors Program: Strengthening the Student Experience**

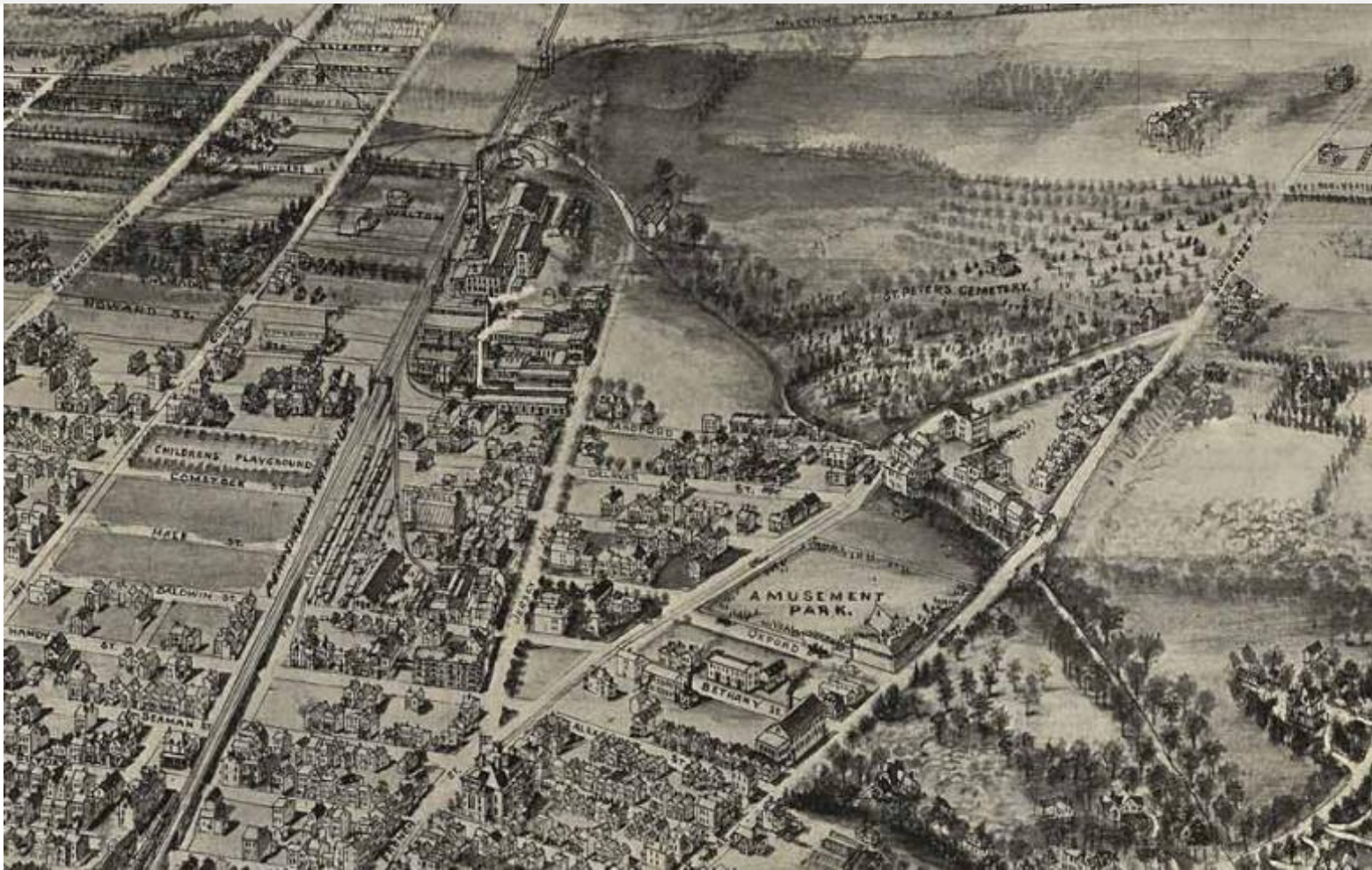
David Tulloch, Ph.D.

Department of Landscape Architecture

GeoHealth Lab, Grant F. Walton Center for Remote Sensing and Spatial Analysis

Rutgers School of Environmental and Biological Sciences

Where to  
begin?



# Lost without a map

- Started out trying to improve cohesion in the SEBS General Honors Program
- Thought the problem simply had to do with participation and programming
- Shifted by the creation of the Honors College



# Finding the right place to start

- Program dates back decades
- Limited written record
- Guided more by precedence and fiat than clear purpose
- Experiencing changes
  - Recent creation of the honors college
  - Doubling the size of the program
- Where to begin?

# Current SEBS Honors Program Mission Statement

# Sought guidance for mission statement

- Faculty director
- Honors program staff
- Current and past students
- Historic documents
- Other honors programs
- Academic literature on honors education

# Draft SEBS Honors Program Mission Statement

The SEBS General Honors Program is focused on

enhancing the undergraduate experience and

strengthening our students by working towards

- better honors students through a strong socially and intellectually connected cohort,
- better education through exceptional interdisciplinary learning environments, and
- better scholars through exposure to robust research and scholarship.

# Challenge

- Still simultaneously need a road map to
  - Build sense of ownership
  - Increase program capacity





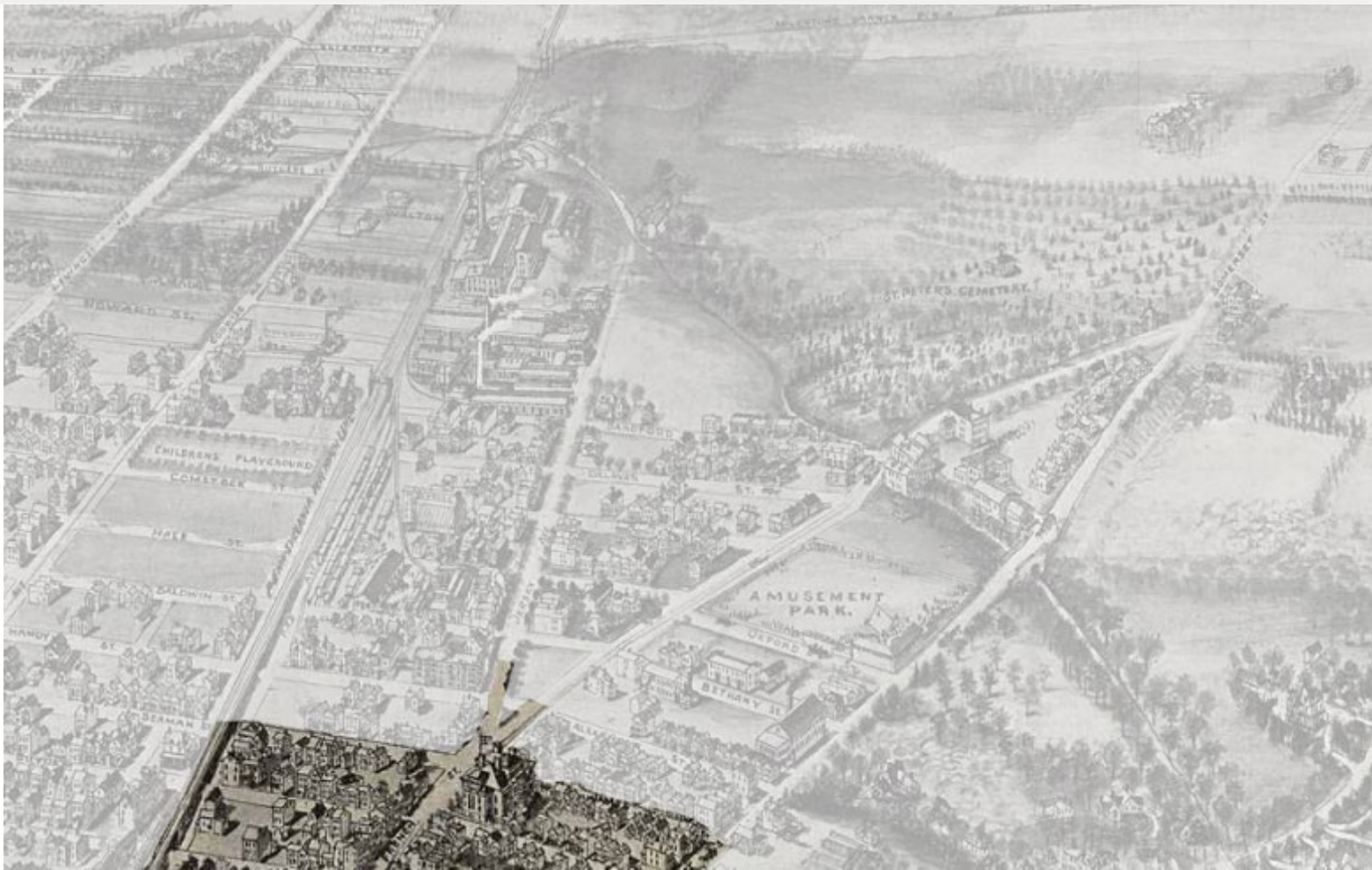
# Mapping out a plan for SEBS General Honors

- Writing a plan that emphasizes:
  - Increased sense of ownership for students in their path and the program
  - Clearer statement of mission and vision – something for faculty, staff and students to believe in – this would drive the development of that plan
  - Development of a strategic plan that is mutually agreed upon by faculty, staff and students as well as Martin Hall
  - Show students their importance with increased administrative support
  - Increased and improved academic and residential honors spaces
  - More diverse student body
  - More robust offerings of activities and learning opportunities

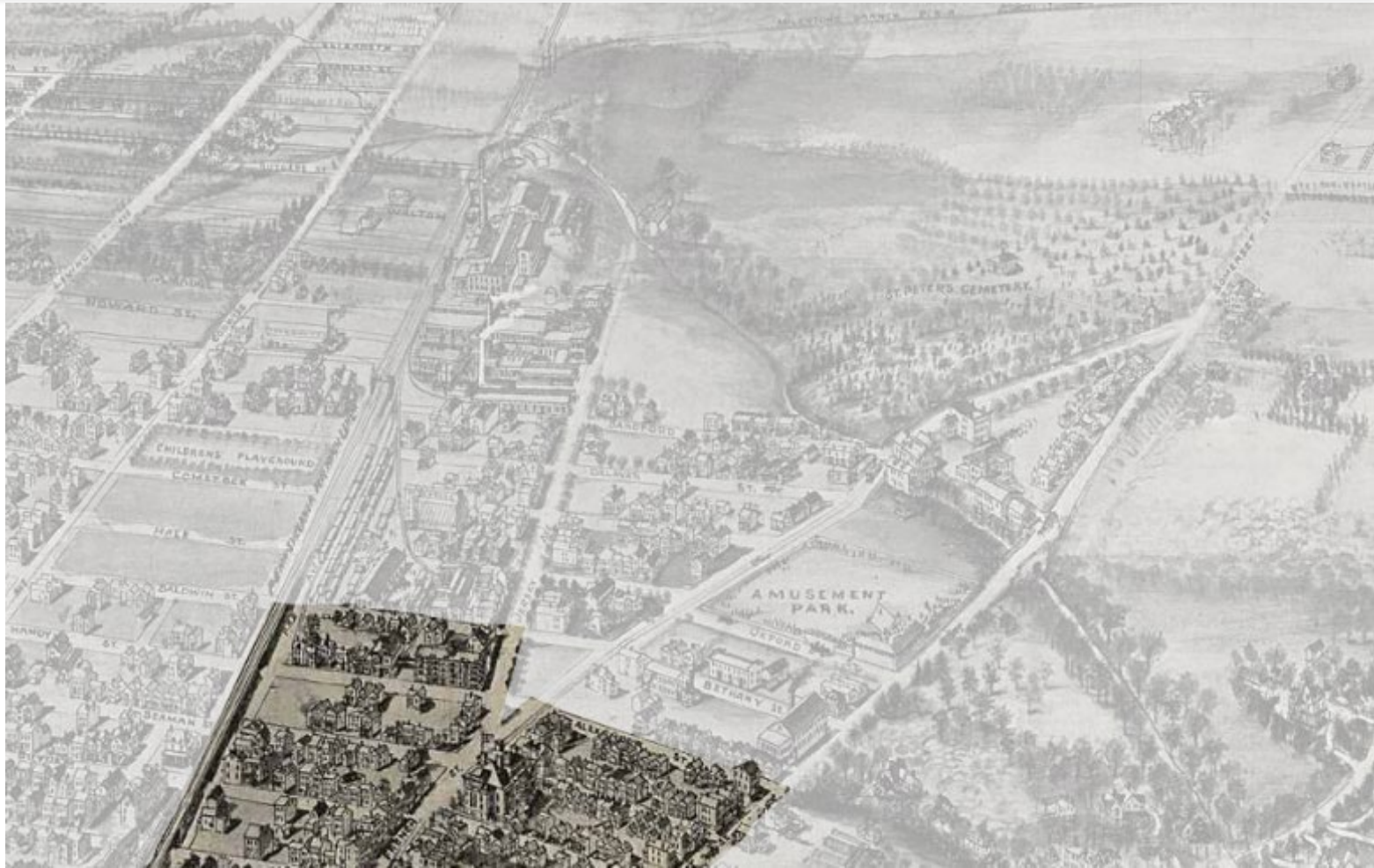
## Immediate Steps

- Student/faculty leadership team to agree on mission and strategic plan elements
- Schedule 1 new end of the year activity for the returning students
- Schedule 1 new fall activity for continuity

Following  
the map

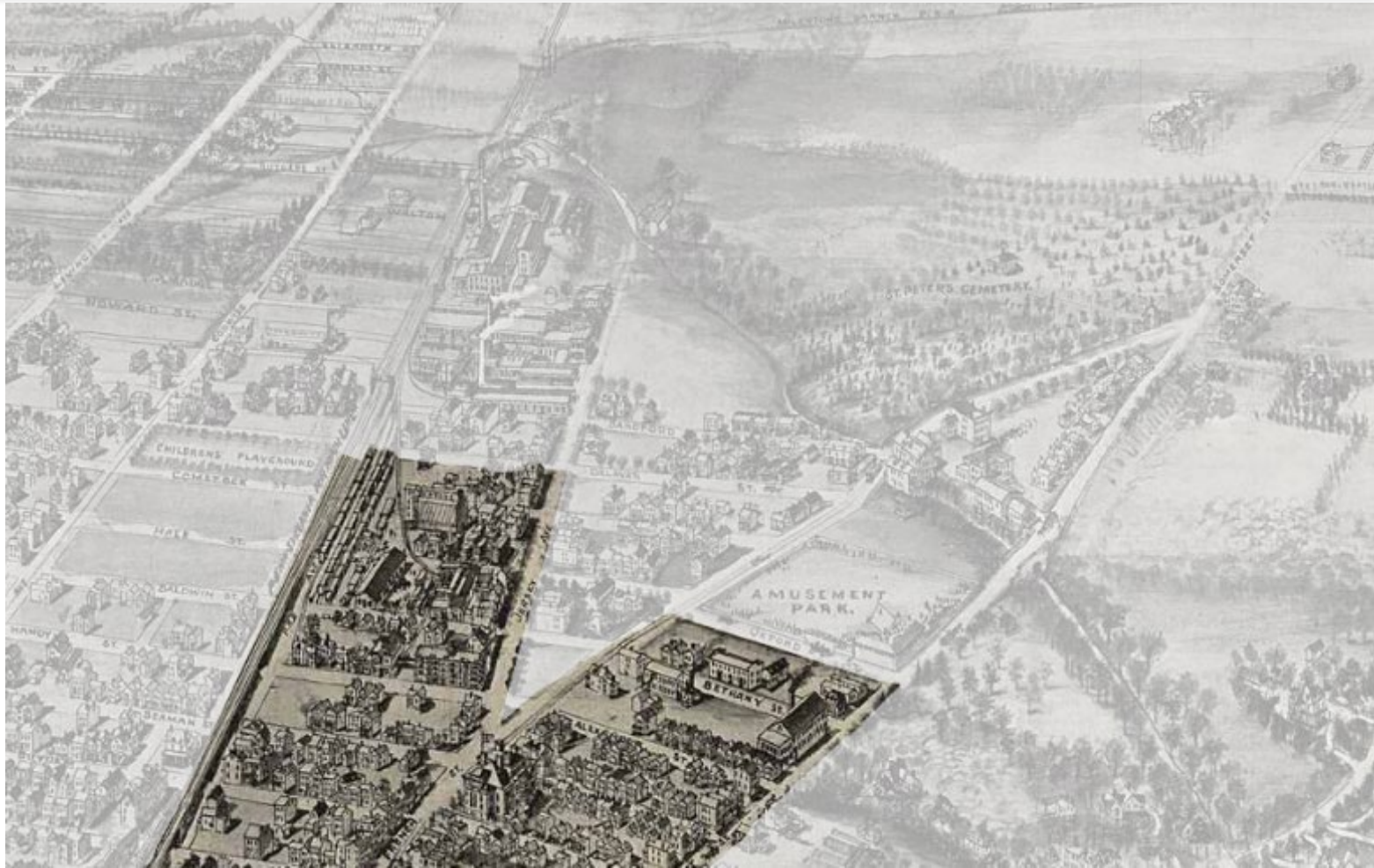


Following  
the map



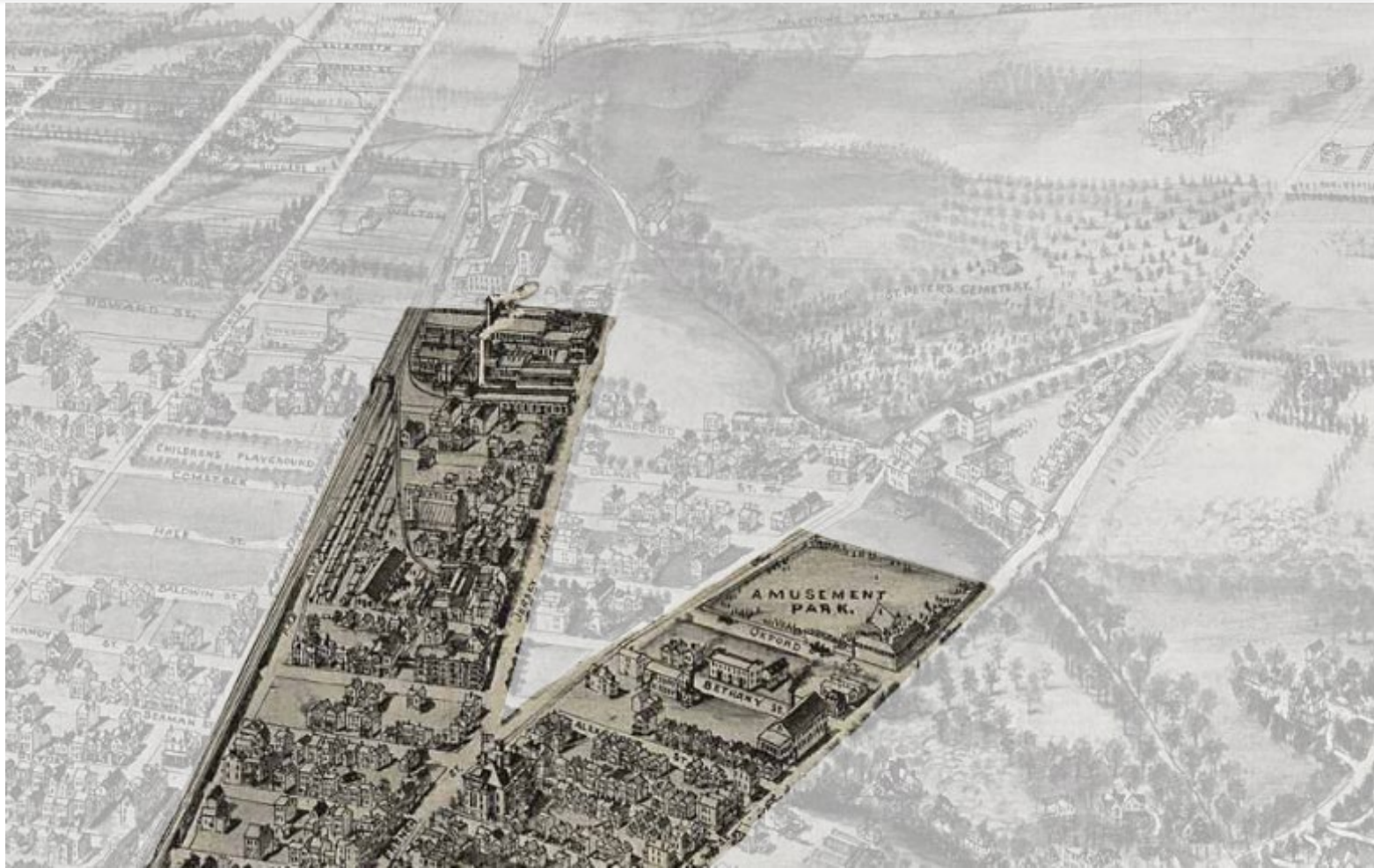


Following  
the map

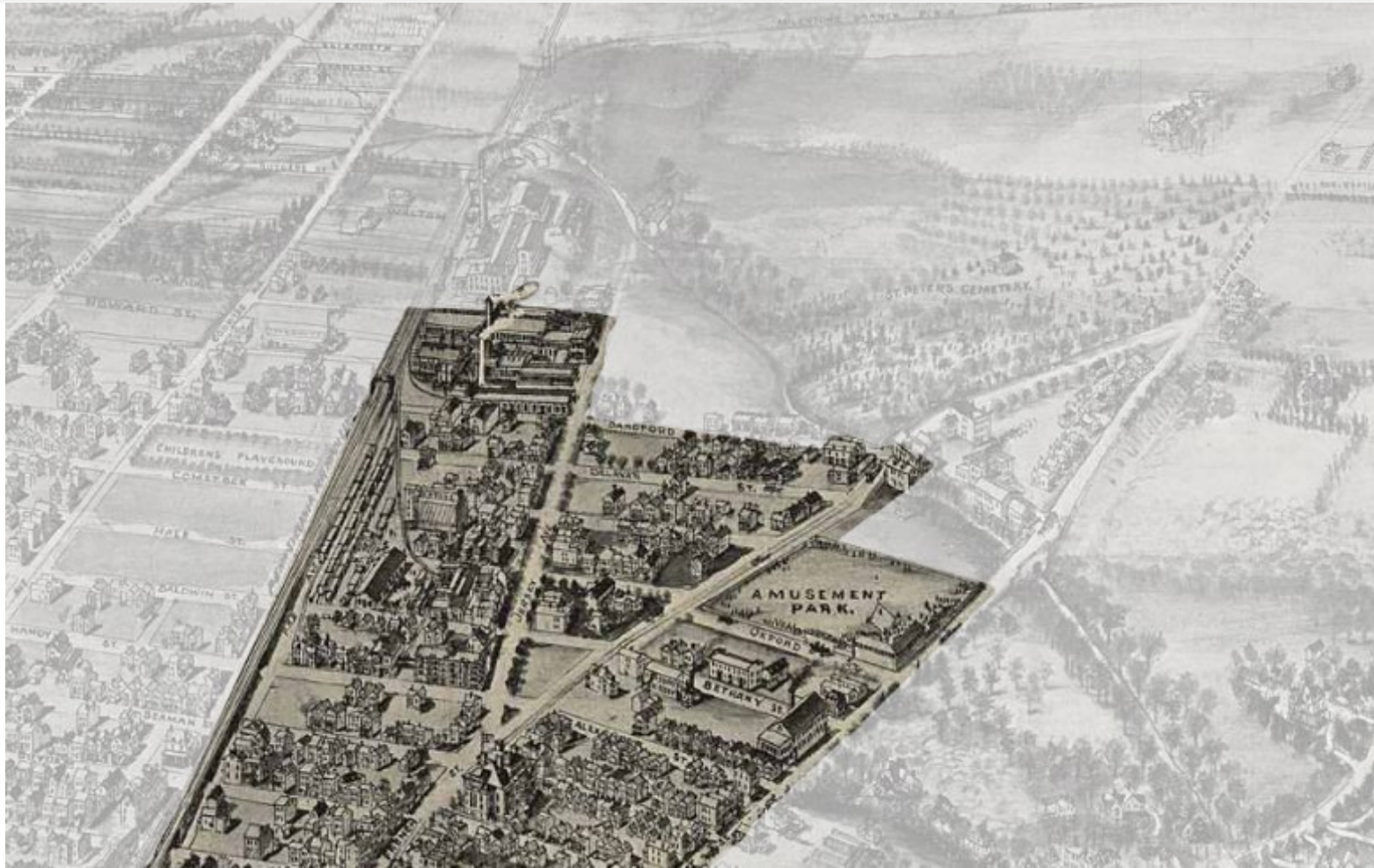




Following  
the map

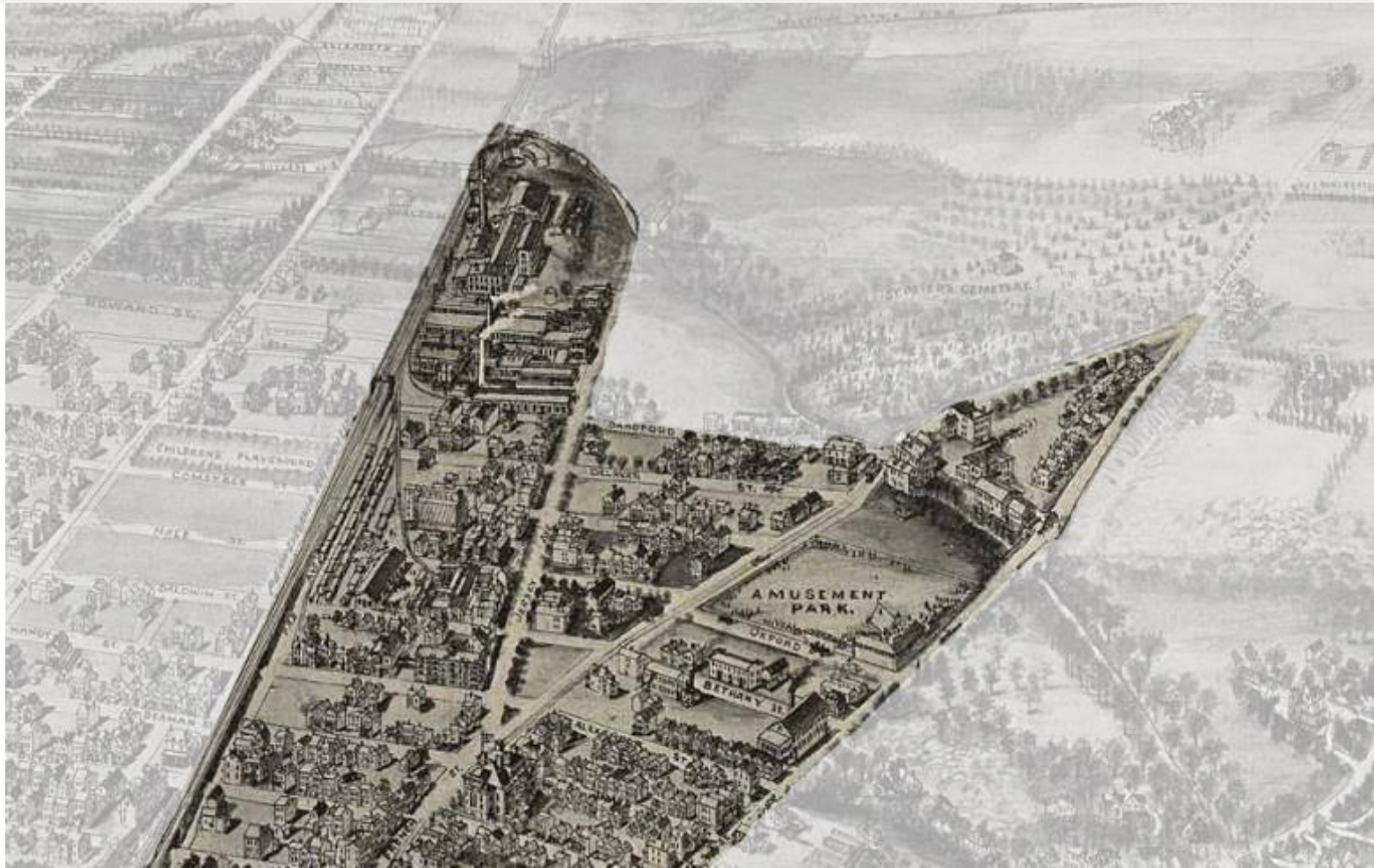


Following  
the map





Following  
the map



Following  
the map





Comments  
and  
Questions

